

Fradiflex – metal water stop

Fixing instructions



- Roll out Fradiflex metal water stop roll (25 m), turn coating to the water retaining side or place Fradiflex metal water stop straightly (pieces of 2.1 metres).
- For angled and round construction joints simply bend the metal water stop to the required shape.
- Before fixing the metal water stop remove the lower protective film tape.
- In case of an existing connecting reinforcement lift Fradiflex metal water stop between the rising reinforcement bars.



Fradiflex metal water stop on the roll is available in two different versions:

A) Version without integrated fixing angle

B) Version with integrated fixing angle



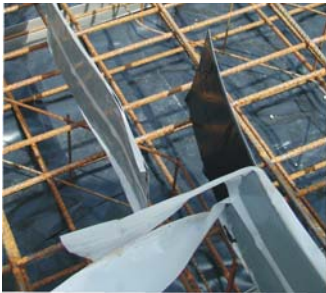
A) Fradiflex metal water stop without fixing angle

The metal water stop is fixed with mounting clips to the upper reinforcement layer by pressing-on with tying wire. Place mounting clips at intervals of approximately 30 to 40 cm. Please proceed in the same way for Fradiflex straight metal water stop (pieces of 2.1 metres).

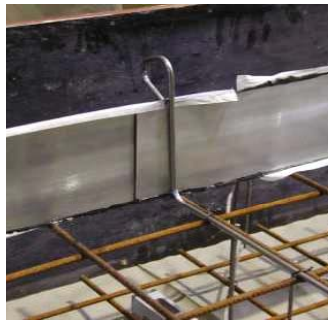


B) Fradiflex metal water stop with fixing angle

The metal water stop is fixed with tying wire to the upper reinforcement layer above the fixing angles. Place tying wire at intervals of approximately 30 to 40 cm.



- Joints are simply overlapped over a length of 10 cm (remove protective film tape prior to fixing); the ends are pressed against each other and then secured with a Fradiflex mounting clip or with the included clamp strap.
- Preparatory thermal treatment at low temperatures is not required.



- During the 1st concrete step, the recommended depth of immersion of the metal water stop is at least 3 cm up to the half width of the metal water stop.
- An undulated positioning of the metal water stop in the construction joint does not affect the function of the metal water stop.



- Only remove the upper protective film tape prior to installation of the reinforcement and / or before closing the formwork.



- Metal water stop with mounting clip fixing – cut through upper part of mounting clip using a bolt cutter for easier removal of protective film tape.
- At T-joints and crossing points Fradiflex is installed by simple overlapping and pressing the ends tightly against each other. Secure overlapping joints using mounting clips or clamp straps.

Note: During storage protect Fradiflex metal water stop against solar radiation.

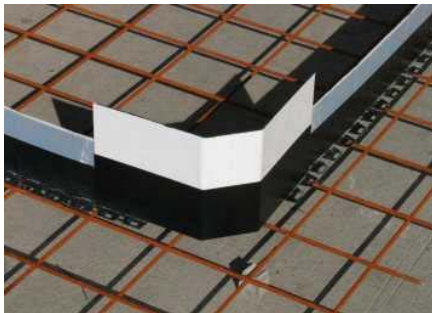
Fradiflex – metal water stop

Combined with element wall's controlled crack joint flashing

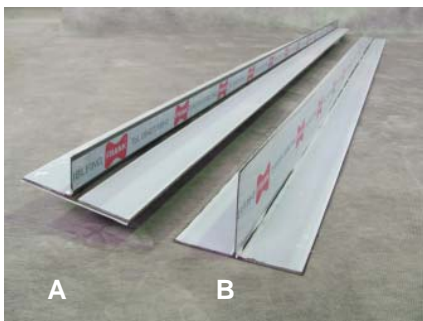
Fixing instructions



- Roll out Fradiflex metal water stop roll (25 m). Turn coating to the water retaining side.
- Before fixing the metal water stop remove the lower protective film tape. Fix Fradiflex metal water stop as straightly as possible on the upper reinforcement layer.



- Prior to fixing, measure appropriate dimensions for Fradiflex corner element to match slab reinforcement. Remove two-parted lower protective film tape and the two protective tapes for the overlapping joints. Overlap Fradiflex metal water stop at left and right hand edges by 10 cm each, press on and fix using the 2 included clamp straps (1 piece clamp strap per butt joint).



- Fradiflex metal water stops for element wall's controlled crack joint flashing are used to design and to seal vertical butt joints as frangible joints.

- A) Element wall's controlled crack joint for linear joint
- B) Element wall's controlled crack joint for angle type joint



- Remove the protective film tape of the required metal water stop for element wall's controlled crack joint flashing (however, do not remove protective film tape with FRANK logo as this tape reduces the bond between the concrete and the metal plate) and afterwards place metal water stop at empty end of the element wall already erected (clean off adherent grit or other contaminations from adhesive surface).



- Position metal water stop so that it will be integrated into the element wall's controlled cracks up to the half width each. Afterwards fix element wall's controlled crack joint flashing to the Fradiflex metal water stop protruding out of the base slab by at least 6 cm or to the Fradiflex corner element, press on and secure using the 2 included clamp straps.



- The erected and fixed metal water stop for element wall's controlled crack joint flashing is then simply built against the element wall. (It does not need to be fixed to the element wall).



- Shortly before concreting the metal water stops for element wall's controlled crack joint flashing are fixed with special, re-usable fixing loops. Different types of fixing loops are required for joints and corners; different wall thicknesses require different dimensions of fixing loops as well.

Due to the considerable inherent stability of Fradiflex metal water stops they do not need to be fixed to the element wall.



The fixing loops can already be removed during concreting and can be re-used several times.

Attention: If the inner clear distance of the element wall shells is less 18 cm or equivalent to 18 cm, the metal water stop for element wall's controlled crack joint flashing must be fixed to the Fradiflex metal water stop or to the Fradiflex corner element already before element wall completion, as it will be impossible to fix the clamp straps to the metal water stops for element wall's controlled crack joint flashing at a later moment.